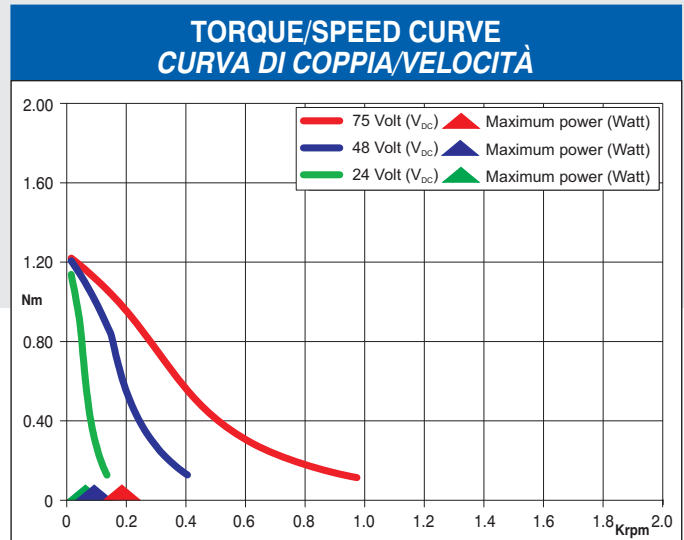
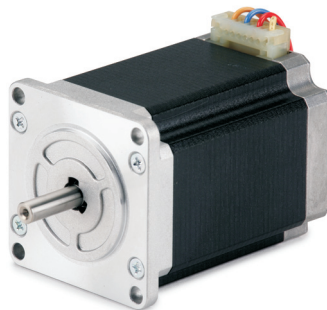
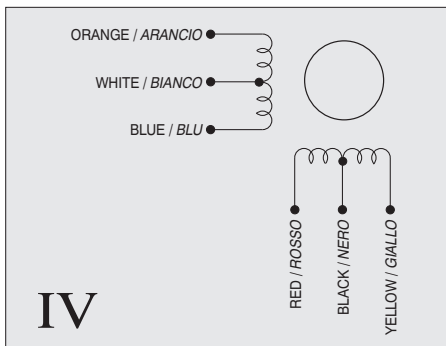


Dimensions in mm.

FEATURES CARATTERISTICHE	
MODEL MODELLO	103 - H7126 - 0140
BASIC STEP ANGLE	$1.8^\circ \pm 0.09^\circ$
BIPOLAR CURRENT (Amp)	0.75 <sup>(*)</sup>
UNIPOLAR CURRENT (Amp)	1
RESISTANCE (Ohm)	8.6
INDUCTANCE (mH)	19
BIPOLAR HOLDING TORQUE (Ncm)	165
UNIPOLAR HOLDING TORQUE (Ncm)	130
ROTOR INERTIA ( $\text{Kgm}^2 \times 10^{-7}$ )	360
THEORETICAL ACCELERATION ( $\text{rad} \times \text{sec}^{-2}$ )	45800
BACK E.M.F. (V/Krpm)	92
MASS (Kg)	1
LEADS CODE	IV



<sup>(\*)</sup> Bipolar series connection.  
<sup>(\*)</sup> Collegamento bipolare serie.



R.T.A. s.r.l. PAVIA (ITALY) SANYO DENKI CO., Ltd (JAPAN)

EMC 03-11

Suggested R.T.A. driver: CSD Series, NDC Series, HGD Series.



R.T.A. s.r.l.  
Via E. Mattei - Fraz. Divisa  
27020 MARCIGNAGO (PV) ITALY  
Tel. +39.0382.929.855 - Fax +39.0382.929.150  
www.rta.it

R.T.A. Deutschland GmbH  
Bublitzer Straße 34  
40599 DÜSSELDORF (Germany)  
Tel. +49.211.749.668.60 - Fax +49.211.749.668.66  
www.rta-deutschland.de

R.T.A. IBERICA-Motion Control Systems S.L.  
C/Generalitat 22, 1° 3°  
08850 GAVA - BARCELONA (Spain)  
Tel. +34.936.388.805 - Fax +34.936.334.595  
www.rta-iberica.es